

User Guide – RobotControl-Updater

Software Version 14-001, May. 11th, 2023

support@cpr-robotics.com

1. Scope of the Software

This software updates the Commonplace Robotics embedded robot control (“RobotControl”) and the programming and simulation software CPRog/igus Robot Control (iRC).

The software does not require installation, it can be run from e.g. a USB flash drive.

2. Safety



- Press the emergency button to prevent any motions of the robot
- When upgrading the RobotControl and CPRog/iRC software existing files will be overwritten. Any robot specific changes have to be added again.
- Please check your robots programs slowly (override $\leq 30\%$) first after upgrade! Be prepared to stop the robot with the emergency stop!

3. Embedded Control: Updating the RobotControl Software

Step 1:

Download the file Updater_iRC_VXX-XXX.zip from wiki.cpr-robots.com

Step 2:

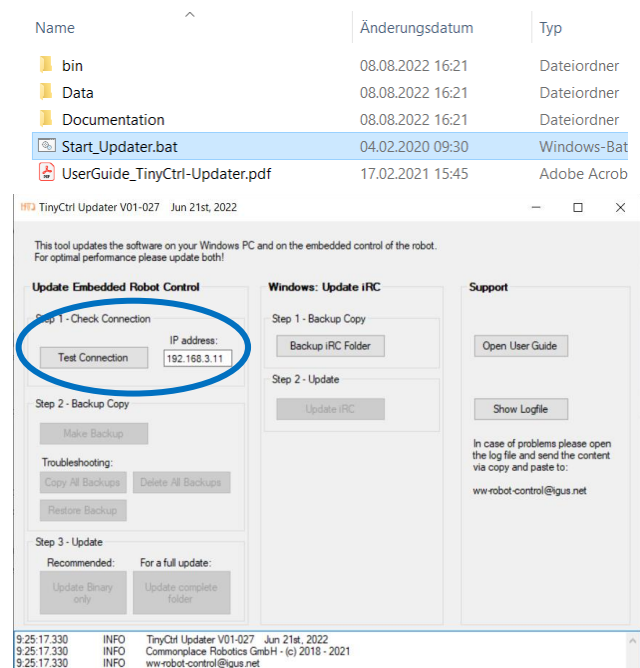
Extract the .zip file. An installation is not necessary, it will also work from USB flash drive.

Step 3:

Start the software with a double click on Start_Updater.bat

Step 4:

Enter the IP address of the robot and click “Test Connection”. The updater will test whether it can connect to the embedded computer.

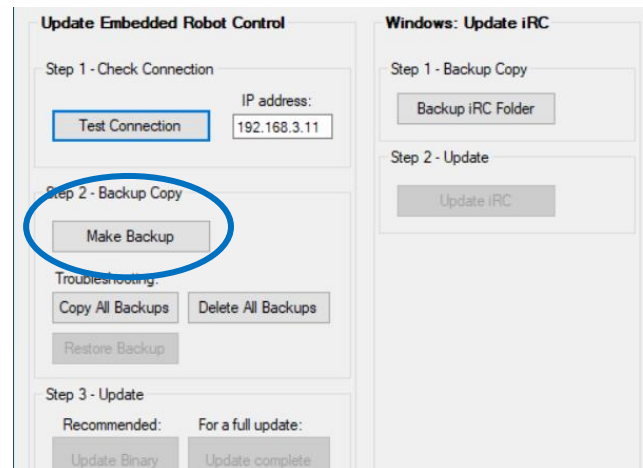


Step 5:

Click “Make Backup” to create a backup of the robot control software and its configuration. This will take a couple seconds.

A copy of the backup will be stored on your PC in the “Backup” directory of the updater. Another copy remains on the embedded control. If the memory on the embedded control is too low click “Copy All Backups” to copy the backups to your PC, then “Delete All Backups” to remove them from the robot control.

To restore a backup click “Restore Backup”.



Step 6:

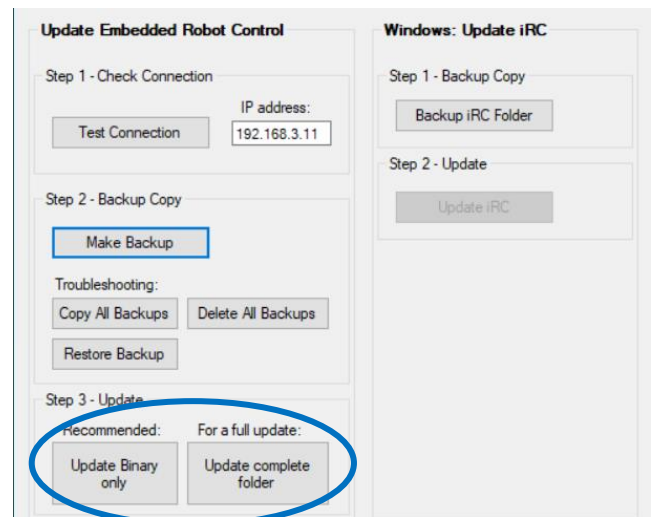
Update the robot control:

Recommended: Press “Update binary only” if your system is working correctly and you only want to update to a new version. This does not change any configuration files or robot programs.

Full update:

Press “Update complete folder” to overwrite the binary and all configuration files. It might be necessary to download the robot programs again.

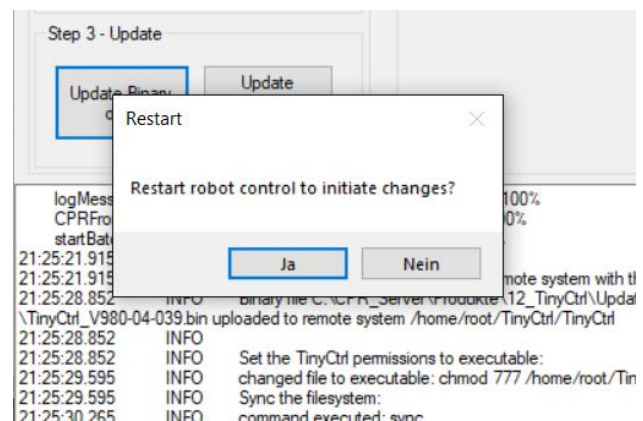
When doing the full update you will be asked to choose a file that contains the configuration for your robot. In the window that appears first open the directory for the voltage of your robot (24V or 48V), then select the package for your robot type.



Step 8:

Restart the robot control.

This takes 30 to 60 seconds.



Step 9:

Test the robot:

Move all joints slowly via CPRog/iRC or the handheld joystick. Test all programs with a velocity override of 30% or less.

Be prepared to stop the robot with the emergency switch!

4. Windows: Updating the CPRog/iRC Robot Control Software

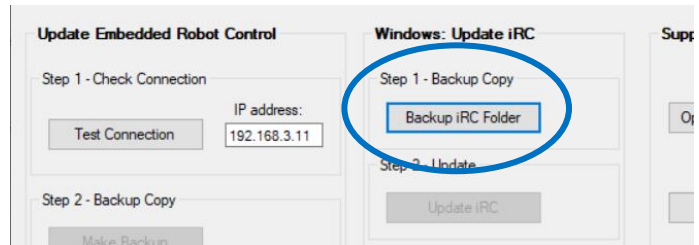
The Updater also contains the current CPRog/iRC version which is designed to operate with the same RobotControl version. It is therefore recommended to also update CPRog/iRC!

Step 1:

Close CPRog/iRC if it is running.
In the updater click
“Backup CPRog/iRC Folder”

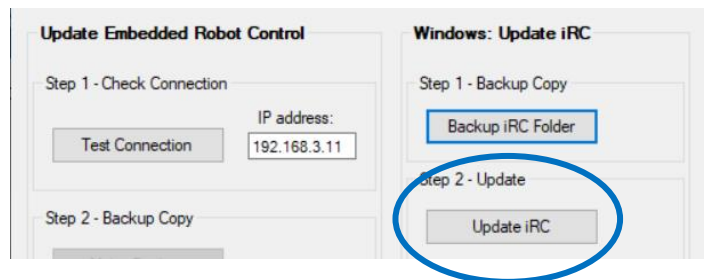
This creates a backup copy of the configuration and program files on your PC. You can easily switch back if you need to.

Note: The backup can only be created automatically if CPRog/iRC is installed directly to C:\



Step 2:

Press the “Update CPRog/iRC” button. This will start the CPRog/iRC installer.



Step 3:

Follow the CPRog/iRC installation.

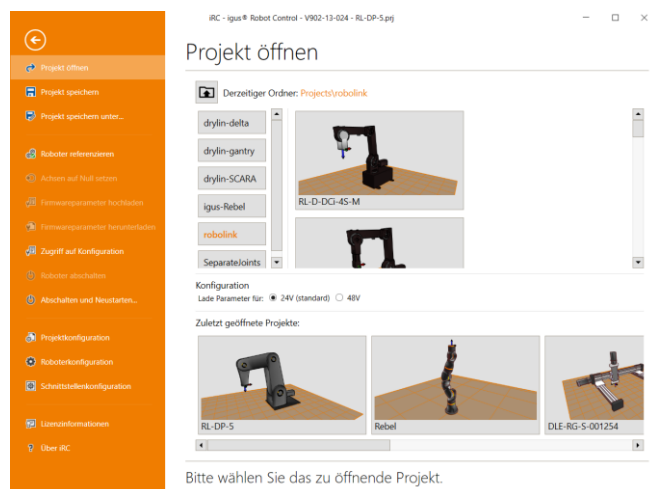


Step 4:

Choose the correct project for your robot.

When connecting to the robot the configuration will be checked. If there is a mismatch between RobotControl and CPRog/iRC you will see an error message with the configuration on both sides.

In this case please load the correct project in CPRog/iRC.





Please check your robot programs slowly (override $\leq 30\%$) first after upgrade!
Be prepared to stop the robot with the emergency stop!

5. Support

If there are problems please send the following to: support@cpr-robotics.com

- A description of the problem
- The robot type
- The robots serial number
- The log file of the updater: find logMessages.log in the updaters directory
- Issues when starting CPRog/iRC, the following files from the CPRog/iRC directory:
 - install.log
 - startUp.log
 - logMessages.log
- Issues with the embedded robot control (RobotControl):
 1. Open CPRog/iRC
 2. Click the question mark button in the lower right corner of the 3D view
 3. Click “Collect Log Files” and follow the dialog.
 4. Send the package that is created.